

• PINNACLE •

AT THE  
*heart*  
OF AUSTRAL



House Area: 179sqm

Land Area: 309sqm

4 2.5 2

## HOUSE & LAND PACKAGE LOT 8

Whether you're looking for the convenience of the local Austral shopping village, a short walk to the beautiful Western Sydney Parklands or close proximity to some of the most highly regarded schools in the area, Pinnacle is the perfect place to build your new home in the heart of Austral.

Pinnacle benefits from quick access to the Leppington Train Station, the M5 and Westlink M7 and is in prime position to take full advantage of the future Western Sydney Airport.

Choose your new home today.

# \$709,900

(PACKAGE PRICE)

### INCLUSIONS

- \* Essence Façade
- \* Tempo Living Guarantees
- \* Move in Ready Price
- \* Driveway
- \* Floor coverings
- \* A/C with 5-year Warranty
- \* 5-year warranty for all Appliances
- \* Stone tops to Kitchen and Vanities
- \* Overhead cupboards with bulkhead
- \* Soft close drawers and doors
- \* Freestanding Bath
- \* Sliding Mirrored robes

Your Home, Your Life

**TEMPO**  
LIVING

TEMPO LIVING  
HELLO@TEMPOHOMES.COM  
1800 083 676

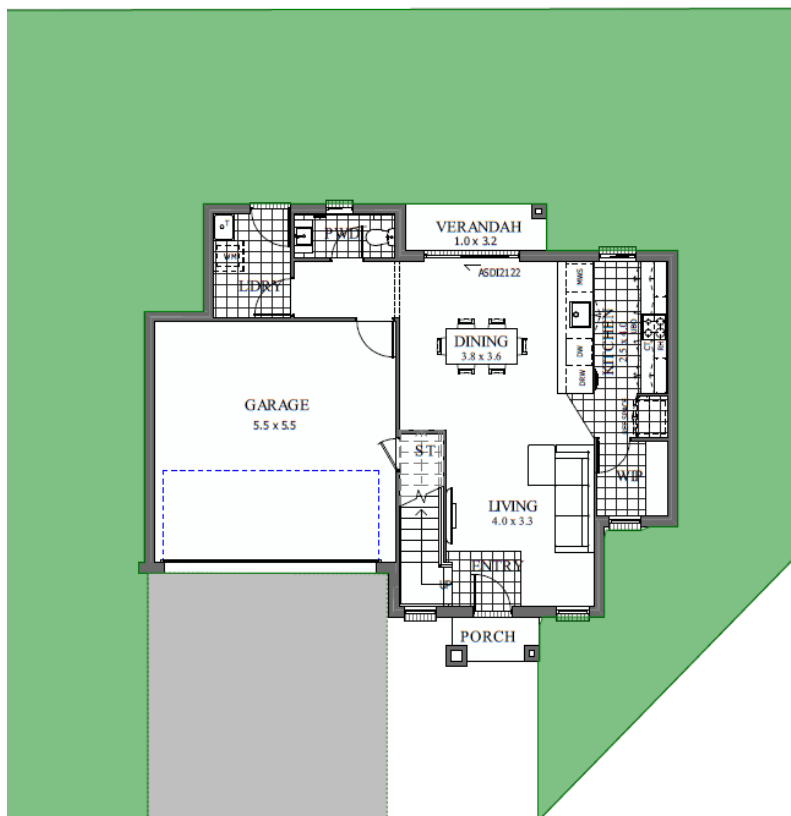
1300 814 848 | [pinnacleaustral.com.au](https://pinnacleaustral.com.au)

vantage property

Disclaimer: The developer and all other related companies do not make any representations or give any warranties that the information set out in this document is or will remain accurate or complete at all times and they disclaim all liability for harm, loss, costs, or damage which arises in connection with any use or reliance on the information.

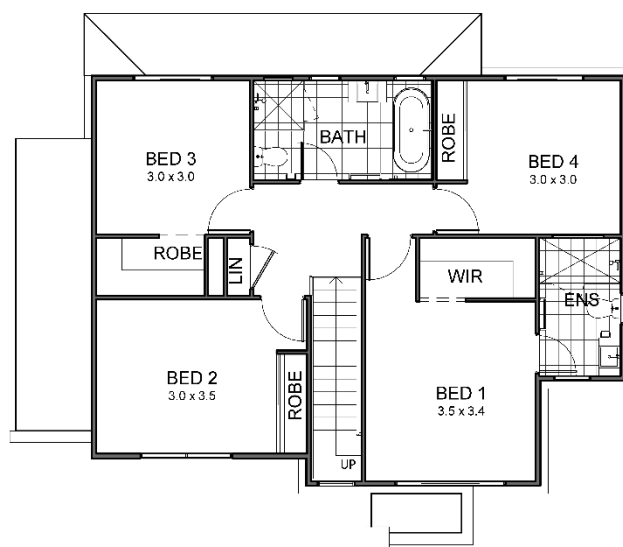
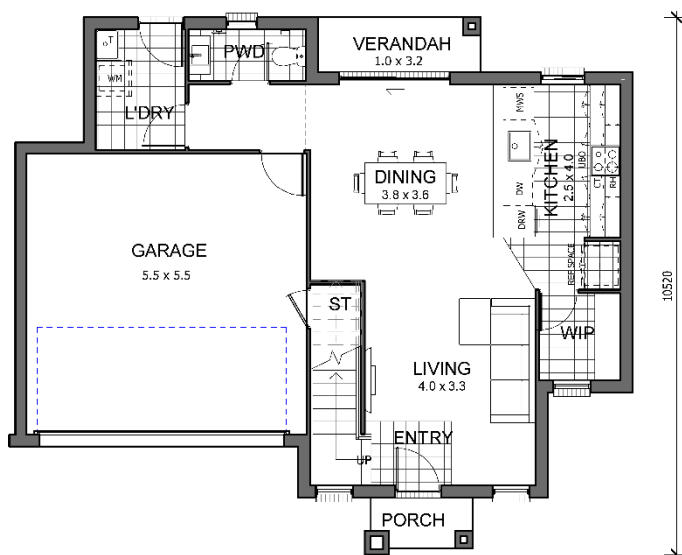
# • PINNACLE •

AT THE  
*heart*  
OF AUSTRAL



Your Home, Your Life

**TEMPO**  
LIVING



1300 814 848 | [pinnacleaustral.com.au](http://pinnacleaustral.com.au)

 **vantage** property

Disclaimer: The developer and all other related companies do not make any representations or give any warranties that the information set out in this document is or will remain accurate or complete at all times and they disclaim all liability for harm, loss, costs, or damage which arises in connection with any use or reliance on the information.